

More Than  
\$80,000 Raised  
at Art of Caring



## Foundation Changes Fund-raising Calendar

*Above & Beyond Moves to Spring*

The Baptist Memorial Health Care Foundation is moving its fall Above & Beyond employee giving campaign to the spring.

For the past few years, colleagues were offered an opportunity to give to the Foundation and The United Way during October. This fall,

colleagues will be able to donate to The United Way, while Foundation gifts will be sought in the spring.

"We split the campaigns to eliminate any confusion and provide a clear picture of the importance of colleagues' support for the charitable mission of the Foundation and the role The United Way plays in meeting the diverse needs of our community," said Jenny Prascher,

director of Development for the Foundation.

United Way collaborates with a broad range of civic-minded people and organizations to identify and resolve issues. Partners include schools, government agencies, businesses, neighborhood associations and community devel-

*(Continued on page 4)*

## Baptist Supports International Research Facility

At any time, more than 100 physicians and clinicians may be receiving training and education at the Medical Education and Research Institute, one of the more unique hands-on medical training and research facilities in the nation.

By using non-embalmed donor cadavers, the MERI is able to offer teaching experiences that are as close to the real thing as possible.

"We're a hands-on facility that attracts physicians and medical professionals nationally and from 27 different countries," said Christopher Cox, director of education and research at MERI. "In fact, we have about 5,200 trainees per year who visit to learn first-hand about medical procedures and techniques and practice on non-embalmed cadavers."

For more than a decade, the MERI has been a leader in the development

*(Continued on page 5)*



More than 5,000 physicians and clinicians from across the nation and 27 foreign countries train using Medical Education Research Institute facilities. Trainees can learn first-hand about medical procedures and techniques by practicing on non-embalmed cadavers. In these above and left photos, physicians train with a new medical device.

## GuideStone Annuity Representative Schedule

Dates and times are subject to change. Please contact your facility's Human Resources office for information. Baptist colleagues can contact Ken Peavy at 901-226-3518 or e-mail Ken.Peavy@GuideStone.org.

September 4	Baptist Memorial Hospital-Memphis
September 5	Baptist Trinity Home Care & Hospice
September 6	Baptist Memorial Hospital-DeSoto
September 7	Shared Services (Corporate Building)
September 10	Baptist Memorial Hospital-Memphis
September 12	Baptist Memorial Hospital for Women
September 14	Baptist Rehabilitation-Germantown
September 17	Baptist Memorial Hospital-Memphis
September 18	Baptist Memorial Hospital-Union City
September 19	Baptist Memorial Hospital-Huntingdon
September 20	Baptist Memorial Hospital-Union County
September 24	Baptist Memorial Hospital-Memphis
September 26	Baptist Women's Hospital
September 27	Baptist Memorial Hospital-North Mississippi
September 28	Baptist Memorial Hospital-Collierville

## Health Care Observances

### Monthlong Observances

Baby Safety Month  
 Cholesterol Education Month  
 5-A-Day Month Campaign  
 Gynecologic Cancer Awareness Month  
 National Head Lice Prevention Month  
 Leukemia, Lymphoma and Myeloma Awareness Month  
 Light the Night (Leukemia and Lymphoma Society's annual event)  
 Pain Awareness Month  
 Prostate Health Month  
 National Sickle Cell Awareness Month  
 Thyroid Cancer Awareness Month

### Weeklong Observances

Sept. 1-7: National Childhood Injury Prevention Week  
 Sept. 9-15: National Assisted Living Week  
 Sept. 9-15: National Healthcare Environmental Services and Housekeeping Week  
 Sept. 9-15: Nephrology Nurses Week  
 Sept. 9-15: National Suicide Prevention Week  
 Sept. 16-22: Prostate Cancer Awareness Week  
 Sept. 16-22: Prostatitis Awareness Week  
 Sept. 16-22: National Rehabilitation Awareness Celebration

### Recognition Days/Events

Sept. 2-3: Jerry Lewis Muscular Dystrophy Association Labor Day Telethon  
 Sept. 9: National Grandparents Day  
 Sept. 15: Neonatal Nurses Day  
 Sept. 26: National Women's Health & Fitness Day  
 Sept. 29: National Family Health and Fitness Day

*Trust in the Lord with all your heart and lean not on your own understanding. In all your ways acknowledge Him and He shall direct your paths.*

## PROVERBS 3:5-6

## Useful Numbers

### Center for Education and Organizational Development

■ To register for classes and seminars hosted by CEOOD, call (901) 227-0660.

### Information Systems Customer Support Center

■ Open seven days a week, 24 hours a day. Colleagues needing computer technical assistance can call (901) 227-7777, (888) 838-3777 or e-mail HelpDesk@bmhcc.org.

## Baptist Offers Breast Cancer Support Group

Baptist's Women's Health Center hosts Women Helping Other Women, a breast cancer support group, on the second Tuesday of every month at 7 p.m.

This month's meeting will be held Sept. 11 in the lobby of the Women's Health Center at 6215 Humphreys Blvd., Suite 100. Women diagnosed with breast cancer, undergoing breast cancer treatment or recovering from breast cancer are invited to attend.

Glenn Ann Martin, Ph.D., psychologist, facilitates the support group. Martin earned her doctorate in psychology from The University of Memphis in 1994, which is the same year she began working with breast cancer patients. Also, she is certified as a professional grief therapist by the Association for Death Education and Counseling.

Research shows that women who participate in a support group following a breast cancer diagnosis report better quality of life and have improved outcomes.

For more information about WHOW or the Baptist Women's Health Center, please call 901-227-9694.

## Baptist Women's Hospital to Offer Free Home Makeover Seminar

Baptist Memorial Hospital for Women is offering a free home makeover seminar titled "Home Staging and Curb Appeal" on Wednesday, Sept. 5, from noon until 1:30 p.m.

The seminar will be presented by landscape designer Rebecca Veneklasen, home stagers Carmel Hopper and Melissa Douglas and professional organizer Cindy Brown. Each of these women will give advice on how to update your home before you sell it. They will discuss how exterior changes can make your home more attractive to buyers, as well as other tips on how to increase the value of your home. Topics such as staging your home, creating outdoor spaces for entertaining and decluttering your life and closets will also be covered during the seminar. Reservations are required.

For more information about this free seminar or to make your reservations, please call 901-227-8478 or 800-4-BAPTIST between 9 a.m. and 6 p.m. Monday through Friday or visit [www.baptistonline.org](http://www.baptistonline.org).

## BMHCC Helpline/Hotline

### 877-BMH-TIPS

If you have a question about legal or regulatory requirements, suspect any violation of BMHCC Standards of Conduct, legal or regulatory requirements or suspect that anyone is committing acts of patient abuse in any form, call 877-BMH-TIPS. Reports to the hotline may be made anonymously. Calls are handled confidentially to the extent allowed by law. Baptist does not tolerate retaliation for reports made in good faith. It is the policy of Baptist Memorial Health Care to admit and provide services to patients and guests without distinction due to race, color, age, religion, sex, national origin, handicap or disability. Marilyn Dunavant is Baptist's corporate compliance officer.

## Baptist Sponsors Adult Diabetes Support Groups

Baptist Memorial Hospital-Memphis and Baptist Rehabilitation-Germantown are sponsoring free monthly support groups for adults diagnosed with diabetes.

At Baptist Memphis, the group meets the second Thursday of every month at 7 p.m. in the Ann L. and Joseph H. Powell Library, located in the physicians' office building adjacent to the hospital at 6025 Walnut Grove Road. September's meeting will be held Sept. 13.

Baptist Rehab-Germantown's support group will meet at 7 p.m. the last Monday of every month in the hospital's Community Room 125. The hospital is located at 2100 Exeter Road. September's meeting will be held Sept. 24.

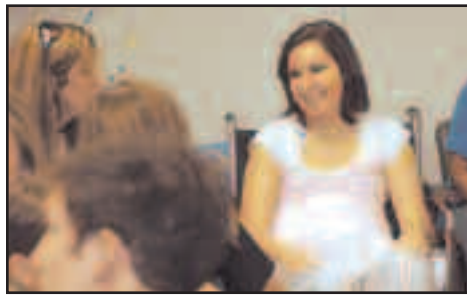
Designed to benefit both the newly diagnosed and those who have been living with the disease, the support group provides a comfortable setting for discussion, education and encouragement. Spouses and family members are encouraged to attend. No reservations are needed.

September's speaker at Baptist Memphis will be registered nurse Rachel Curbow. She will present on the topic "Skin and Foot Care with Diabetes." Curbow is a certified wound care nurse who specializes in prevention, causes and treatment of wounds or foot ulcers related to diabetes. Her presentation, lasting from 7-8 p.m., is sponsored by Smith-Nephew.

In September at Baptist Rehab-Germantown, the Rev. Ken Frazier will discuss "Coping with Change," from 7-8 p.m. He will discuss how to cope with the changes associated with having diabetes and how these changes affect your body and your loved ones.

For more information about the group meeting at Baptist Memphis, please call 901-226-5000 or 800-4-BAPTIST.

To find out more about the group meeting at Baptist Rehab-Germantown, please call 901-757-3428.



## Friends Travel to Baptist Memphis for Patient's Birthday

*Lizzie Roberts, center, is surprised by a party for her 17th birthday recently at Baptist Memorial Hospital-Memphis. Her friends from Granada, Miss., came to the hospital to surprise her. Lizzie has been a patient in the heart transplant unit inside Baptist Memphis' Heart Institute and is on a ventricular assist device. Above, she laughs with her friends.*

## IHI, Baptist Memphis Achieving ED Goals

In 196, Baptist Memorial Hospital-Memphis' Emergency department partnered with the Institute for Healthcare Improvement, to enhance its processes, to provide a shorter length of stay, and to reduce patient waiting times to provide patients with quality care.

Since then, the ED has developed interdisciplinary committees to enhance processes and care for emergency room patients.

These committees have enhanced heart attack care and communication with Baptist Memphis' laboratory for blood work.

The McKesson Tracking Board, implemented in April 2007 in conjunction with a new triage methodology, has decreased turnaround times. The number of patients who left without being seen has declined significantly during the last six months and is below the national benchmark. The tracking board data have also aided in the reduction of nearly 15 minutes for diagnostic procedures. In addition, patients arriving by ambulance are being triaged within five minutes of arrival due to this project.



*The Baptist Memorial Hospital-Memphis Emergency department team.*

At an IHI meeting in Los Angeles in May, the team planned an IHI education and events board for the hallway outside the ED staff lounge. Lindsey Edwards, RN, and Christina Hooper, RN, painted the wall with a movie theme, titling the board "Coming Attractions."

Maggie Roaten, nurse manager, along with emergency room head nurses, staff and physicians used the wall recently as an aid to educate the staff about IHI and the 120-day goals for the emergency room.

New goals for ED patient satisfaction include a more patient-friendly discharge process with discharge instruction packets and maps with information about the emergency room.

# Foundation Changes

(Continued from page 1)

opment corporations. The United Way's Day of Caring, to be held Sept. 7, is the largest one-day volunteer service event in the area, where people of diverse professions and background assist with construction and repair projects, landscaping, cleaning and painting at various needy or underserved locations.

Baptist's United Way campaign will be headed up by Scott Fountain, senior vice president of Baptist Memorial Health Care.

"Our colleagues have a long history of helping others in need," Fountain said. "We're proud to partner with The United Way and contribute to their efforts to benefit our community."

Colleagues can still donate PTO to the Foundation in December 2007. Forms will be available beginning in November.

For information, colleagues can contact the Foundation at 901-227-7123, 800-895-4483 or e-mail Sarah.Harris@BMHCC.org.



## Shared Services' Service First Champion

*Stephen C. Reynolds, president and CEO of Baptist Memorial Health Care, presents a Service First Champion certificate to Christina Knoernschild, a representative of provider relations for Baptist Health Services Group.*

# THE PRESIDENT'S CORNER



*Stephen C. Reynolds, President & CEO,  
Baptist Memorial Health Care Corp.*

We recently recognized the efforts of some of our colleagues who have worked tirelessly to benefit homeless individuals in our community.

As Baptist Operation Outreach health care for the homeless became part of a decade-long legacy of care for those who need it the most, we celebrated that achievement.

It's a true calling to be a part of a team devoted to the safety and comfort of others, and this team's work is a reflection of our potential at every turn in our organization. Our health care van for the homeless gets to the root of our mission, and in many ways, is how Baptist gets back to basics with health care.

Most patients are seen one at a time. They are treated with respect, and most importantly, they receive exceptional care and attention. Their concerns are heard and addressed, and patients leave the van with renewed vigor to face their challenges.

This is a good reminder about "getting back to basics."

As we become busier with family and work, it's very easy for us to lose sight of what really matters. We speed through our days hurrying to get the kids to school or daycare, we hurry to work, we hurry to get our work done so we can leave at the last possible moment and hurry to pick up the kids, hurry home to hurry through dinner and hurry through preparations for the same thing the next day.

There's a lesson we can learn from our friends who care for patients on the van. Let's re-evaluate what we do and cut away what really doesn't matter. Let's eat together with our families and fellow-

ship. Let's take a moment to sit by our patients and listen to what they have to say. If they have a concern, address it immediately. Shake up the routine a little and get back to what really matters.

In your work and in your life, there are very few things that truly matter. As health care professionals, answering our calling takes priority, and anything at work that detracts from fulfilling that calling may be something that inhibits your ability to get back to the basics.

It's extremely hot outside, and that can certainly have an effect on our personalities. I think it's a perfect time to look at the service our Operation Outreach van performs and evaluate what we have and do — and get back to what's important.

## New Hospital for Baptist Family

I hope you received my recent e-mail message regarding Baptist's intentions to manage a 104-bed hospital in Jonesboro, Ark. Having a presence in Jonesboro is a great fit for our health care system. I'm excited about the new opportunities we have there, and I'm also excited to bring our special brand of Smart Medicine and Inspired Care to another growing community.

If you haven't read the notice yet, Baptist intends to negotiate the acquisition of Northeast Arkansas Medical Center from owner Community Health Systems Inc. Baptist would partner with Northeast Arkansas Clinic, the largest physician-owned multispecialty medical group practice in Arkansas.

Being a native Arkansan and knowing many colleagues who call Arkansas home, I'm happy we're looking into adding another Arkansas facility to our Baptist family. It can only strengthen our mission, and add yet another team of committed colleagues who offer exceptional care to an exceptional community.



*Art of Caring, a silent art auction benefiting Baptist Trinity Hospice through the Baptist Memorial Health Care Foundation, was held recently at Perry Nicole Art Gallery. Above, artist Samuel Man, who also volunteers for Baptist Memorial Hospital-Memphis, discusses his artwork with bidders. At right, Mahafy White stands in front of her photograph that was auctioned. More than 350 attended the auction, which raised more than \$80,000 to benefit Baptist Trinity Hospice and the Baptist Trinity Center for Good Grief.*

## Art of Caring Another Success



## Research Part of Joint Effort (Continued from page 1)

and implementation of a wide range of groundbreaking medical innovations in the neurosurgical, orthopedic and vascular specialties of medicine, especially many of the new minimally invasive surgeries.

Based in Memphis, MERI is a not-for-profit school developed in part as the result of a joint effort of Baptist Memorial Health Care, the Semmes-Murphey Neurologic and Spine Institute and Methodist LeBonheur Healthcare to provide a nonprofit medical teaching and training facility. The MERI was inspired in 1992 by Memphis neurosurgeon Kevin Foley, M.D., and has been open since 1995.

The MERI also supports the Baptist College of Health Sciences, whose anatomy and physiology students visit the MERI as part of their laboratory experience.

"The students get to go once a term and it's a wonderful experience for them," said Janet Saunders, lab supervisor and chemistry professor at the College. "It's a chance for them to see the real thing—the medical terminology comes alive when you get to see it and be a part of that."

And that's why it's also popular for physicians and medical device and

equipment companies. In addition, a customer-first attitude makes MERI an attractive site.

"Let's take a surgeon for example, who wants to learn a new procedure from a fellow surgeon who pioneered the procedure," said Diana Kelly, manager of institutional development at MERI. "That surgeon can watch the surgery being performed in our conference room, then immediately go and practice the procedure supported by faculty and staff on his own using a donor cadaver. The MERI is able to provide that link between learning and doing."

In addition, the MERI is able to take its services on the road to provide the same in-house hands-on training service to physicians and medical equipment manufacturers off-site.

"Having the MERI as part of our medical and research community is a real feather in the cap for the Mid-South and for Baptist Memorial Health Care," said Don Pounds, senior vice president and chief financial officer for Baptist Memorial Health Care and board member of the MERI. "And as more medical procedures become less invasive, the need for mastery of those procedures

## Genesis Program Contributes to Medical Training and Research

Genesis is a willied body donor program for those wishing to donate their bodies for the advancement of science. They can become a donor by pre-signing themselves into the program or become a donor at their time of death, when a legal next-of-kin may sign his or her loved one into the program.

The MERI provides \$600 for a memorial for the donor at the church or funeral home of the family's choosing; provides for the transportation of the donor from the place of death anywhere in the continental United States to the

MERI; files and pays for the death certificates needed; provides the family of the donor with a report detailing the research and training their loved one has made possible; pays for the cost of the cremation of the donor after research has been completed; and returns the ashes to the family if desired or provides the donor or family member the option of interment at a local mausoleum.

"We have very strong support from our donor families," said Christopher Cox, director of education and research at MERI. "Many like to keep up with what research their loved one has been involved in. Even after death, that person is still benefiting society."

For more information, please call 901-278-7841, 877-288-4483 or visit [www.genesislegacy.org](http://www.genesislegacy.org).

becomes critical. This service the MERI and the donors provide truly makes a difference not just here, but across the nation."

Jim Ainsworth, vice president and market leader for Baptist Memorial Health Care, Scott Fountain, senior vice president of Baptist Memorial Health Care and Bill Tuttle, vice president of metro planning for Baptist Memorial Health Care also serve on

the MERI board.

The MERI's 27,000-square-foot facility includes three anatomical teaching labs and seven training and research suites, in addition to the lecture auditorium.

"I stress to our students just how special an opportunity it is to be able to visit MERI," Saunders said. "They're doing good work there to benefit all of us."

# CLASSIFIED ADS

## HOUSEHOLD

- Solid oak china cabinet, 76X46, one centrally located glass door, two glass shelves and accent lighting, \$100; cream-colored dining set, 52X42, oak finish includes four matching oak chairs with cream-colored cushions, removable leaf, \$120; front oak paneling for entertainment center, 59X48, accommodate 36-inch TV, adjustable shelves, \$100. Call 901-239-0036.
- Kitchen table with six chairs, light wood top with hunter green legs, \$100. Call 901-491-2522.
- Whirlpool washer and dryer, eight years old, almond color, \$50 each. Call 901-757-0612.
- Sterns and Foster multi-colored sleeper sofa, \$250; white couch, \$125; two Queen Anne multi-colored wingback chairs, \$100 each. Call 901-830-3893.
- Five-piece bedroom suite, excellent condition, \$125 OBO; hide-a-bed sofa and love seat, good condition, \$125 OBO; round glass-top table with four chairs, \$35. Call 901-767-7376.
- Washer, yellow, and dryer, white, \$25 each. call 901-864-3826.

## REAL ESTATE

- Cordova home FSBO, 4 BR/2 BA, new roof, hardwood floors, carpet, large fenced back yard, master bath with Jacuzzi tub, two-car garage, one-year warranty, \$174,500. Call 901-753-9860.
- Bartlett home FSBO, 4 BR/2 BA, Bolton schools, large open kitchen and den, large back yard, \$167,500. Call 901-937-1248.
- DeSoto County home FSBO in Horn Lake, about 1,430 square feet, 3 BR/2 BA, fenced back yard, above-ground pool, large kitchen, fireplace, two-car garage, refrigerator stays, \$128,500. Call 662-404-0696.
- Home for sale at 4531 Aldersgate Road, 4 BR/4 BA, .46 acres, \$429,900. Call 901-258-9980 or e-mail gsclarkburrow@aol.com.
- Midtown home for lease purchase in Vollintine/Evergreen historical district, 3 BR/1 BA, one-car garage, screened-in porch, hardwood floors, \$1,100 a month, 14-month lease purchase agreement, \$142,000, move in Oct. 1. Call 901-598-0939.
- Bartlett home for sale at 6946 Autumn Hill Lane, 3 BR/2 BA, sunroom, garage, large fenced back yard. Call 901-381-2661.
- Home for rent at 1698 Belvedere Court, two-story townhouse with 2.5 baths, 1,500 square feet. Call 901-409-4800.
- Cottage style lake house, 3 BR/1 BA. Call 662-449-5341.
- Atoka home for sale, 4 BR/3 BA, custom built, two master suites, hardwood in dining room and entry, tile in kitchen and bathrooms, carpet throughout, custom bookshelves in great room, ventless gas logs with hand-carved mantle, 2,400 square feet, \$249,900. Call 901-626-7969.
- Zero-lot home for sale at Goodlett and Central, 3,300 square feet, 3 BR/3.5 BA, hardwood and ceramic, crown molding, central vac, landscape

## CLASSIFIED AD GUIDELINES

Classified ads are published as a service to Baptist colleagues in each edition of Baptist Leader. Submissions for each edition of Leader must be received by 2 p.m. on the preceding Monday. For any ad, please include work number and location for verification purposes and **one non-work number for publication.**

Ads run at least once, and will run as space allows. New ads will receive preference over repeat ads. Services and goods offered must be legitimate and legal, and Leader cannot be responsible for misprints, omissions or false advertising. All ads may be rejected at the discretion of Baptist Memorial Health Care administration or the editor.

Ads for services and goods must be offered or wanted by Baptist colleagues, individuals or independent contractors. Franchises, other non-independent services, medical, dental and other clinical services are not eligible for classified ads.

To submit an ad, e-mail [leader@bmhcc.org](mailto:leader@bmhcc.org) or fax to 901-227-3516.

lighting and sprinkler system, courtyard, sub-zero refrigerator, ice maker, trash compactor, breakfast bar and wet bar, two stairways, custom bookcases, new HVAC, \$487,000. Call 901-754-8351.

- DeSoto County land for sale, 21.9 acres with 3-acre lake, \$10,000 per acre, six-acre wooded lot, \$10,000 per acre. Call 662-838-9263.
- Southaven home for sale at 5706 Alexandria Lane, 3 BR/2 BA with new exterior and interior paint and new carpet throughout, large open great room and kitchen, \$114,900. Call 662-349-0039.

## VEHICLES

- 2004 Mazda Speed convertible, leather, turbo, 6 spd, Bose sound, 8,000 miles, excellent condition, under warranty, \$23,400. Call 901-737-7987 and leave a message.
- 2001 Yamaha Blaster, Nerf bars, \$1,200. Call 901-832-6527.
- 2002 Nissan Pathfinder, about 64,000 miles, gold with black leather, DVD player, power, tilt, sunroof, CD, roof travel rack, excellent condition, \$18,000 OBO. Call 662-544-2610.
- John Deere 4200 tractor, 26 HP, mid and rear PTO, hydrostatic transmission, Truff tires, 92 hours, like new, \$9,000; 1997 Pontiac Grand Prix GTP, red, 130,000 miles, super-charged, leather, power everything, sunroof, \$4,000. Call 901-491-2522.

- 1992 Ford Bronco XLT, 4 WD, body in great condition, \$2,800 OBO. Call 901-340-4951.

## MISCELLANEOUS

- SCUBA gear for sale, including 3-80 and 1-100 tanks, BCDs for male and female, regulators and dive computer, Cousteau and U.S. Divers brands, suits, skins, fins and most other accessories, \$900. Call 731-247-5372 after 6:30 p.m. or leave a message.
- TV and stand, \$125; bed, \$50; recliner, \$50; chair and ottoman, \$50; RCA stereo, \$50; solid oak desk, \$125; four wall units, \$150; storage cabinet, \$25; five Civil War prints, \$25-200; one self-standing wooden shelf, \$30. Call 662-449-5341.
- Dansko professionals, size 39, white, \$50. Call 901-488-6698.
- 1.25-CT T.W. pear-shaped diamond bridal set in 14K white gold, lifetime warranty from Zales, \$1,600. Call 901-406-2027.
- Tracker boots, size 8, \$50. Call 901-832-6527.
- Formal dresses, sizes range from 2 to 8, some worn only once. Call 901-827-9367.
- Six-foot finishing mower, like new, \$1,050; new Agrix 400 3pt. spreader with PTO, \$350; new Nardi 4-foot 3 pt. tiller with PTO, \$1,200; four wheels from 50 cc to 150 cc starting at \$400-1,500. Call 901-491-2522.
- Twin mattress and box springs, like new, all linens included, sheets, comforter, dust ruffle and shams, \$150 OBO. Call 901-326-3849.
- 60-inch RCA rear projection TV, good condition, \$500 OBO. Call 901-491-2522.
- 36-inch Sony flat screen WEGA TV, excellent condition, \$375; 27-inch RCA TV, \$100. Call 901-830-3893.
- Nero 7 Ultra edition software for burning CDs and DVDs, for Windows Vista OS, \$60. Call 901-365-2581.

## SERVICES

- Handyman services, painting, woodwork, roofing, sheetrock, ceramic tile, windows and doors, minor plumbing and electrical work. Call Ralph at 662-342-5086.
- Garage door sales, service and installation, call Jedidiah at 901-831-3001.
- Tree service, cut down big or small trees, haul off all debris, excellent cleanup, insured for all tree work. Call 901-461-6075.

## PETS

- One-year-old male Siberian husky needs a good home, papers, gentle and affectionate. Call 731-836-0380.
- AKC weimaraner puppies for sale, born June 30, 2007, first and second set of shots. Call 662-534-6694.
- Female cat free to good home, shots and fixed, about 3 years old. Call 901-832-8346.

Baptist Leader, Vol. 71, No. 18, August 31, 2007

Editor: Chris Pennington  
phone (901) 227-3504; [chris.pennington@bmhcc.org](mailto:chris.pennington@bmhcc.org)

Photographer: Greg Campbell  
phone (901) 227-3510; [greg.campbell@bmhcc.org](mailto:greg.campbell@bmhcc.org)

*Baptist Leader* is published by Corporate Communications, Baptist Memorial Health Care Corp., 350 N. Humphreys Blvd., Memphis, Tenn. 38120. It is distributed bi-weekly to all BMHCC entities in the Mid-South. **Deadline for article submissions and classified ads is 2 p.m. Monday prior to publication. Send article ideas and submissions as well as classified ads to [leader@bmhcc.org](mailto:leader@bmhcc.org) or fax to (901) 227-3516.** Baptist Leader is printed on recycled paper.